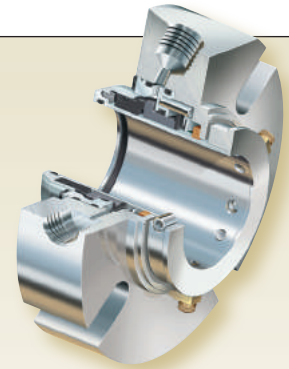
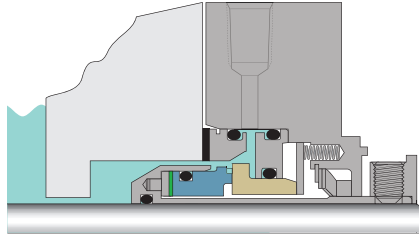


CARTRIDGE SEALS

180™

Heavy-Duty Single Cartridge Seal

A heavy-duty single cartridge seal for maximum reliability in demanding applications



Operating Conditions		Materials	
Size	25 mm – 120 mm (1.000" – 4.750")	Faces	CB, SSC, TC
Pressure	711 mm (28") Hg Vacuum – 40 bar g (600 psig)*	Elastomers	FKM, EPDM, FEPM, FFKM
Temperature	-55°C – 300°C (-67°F – 570°F)	Metals	EN 1.4401 (316SS)
Speed	25 m/s (5000 fpm)	Springs	EN 2.4819 (Alloy C-276)

Standards and Approvals: ISO-3069C, ASME B73.1, ASME B73.2, NSF61

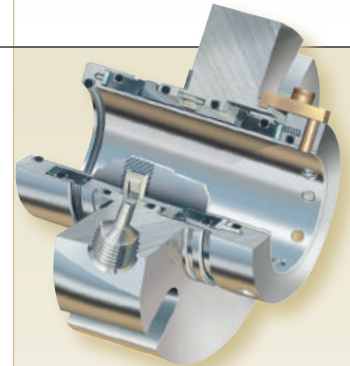
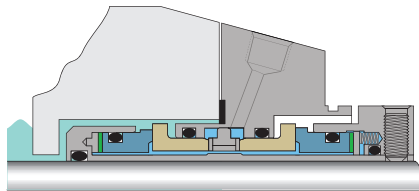
* Seal pressure capabilities are dependent on the fluid sealed, temperature, speed, and seal face combinations. For operation outside the limits and additional materials consult Chesterton Mechanical Seal Engineering.

- Maximum performance for demanding, high-torque applications
- Reliable sealing of slurries

280™

Heavy-Duty Double Cartridge Seal

A double seal design for severe duty and greatest reliability in difficult applications—including mixers and agitators



Operating Conditions		Materials	
Size	25 mm – 120 mm (1.000" – 4.750")	Faces	CB, SSC, TC
Pressure	711 mm (28") Hg Vacuum – 40 bar g (600 psig)* 17 bar g (250 psig) outboard*	Elastomers	FKM, EPDM, FEPM, FFKM
Temperature	-55°C – 300°C (-67°F – 570°F)	Metals	EN 1.4401 (316SS)
Speed	20 m/s (4000 fpm)	Springs	EN 2.4819 (Alloy C-276)

Standards and Approvals: ISO-3069C, ASME B73.1, ASME B73.2, ATEX

* Seal pressure capabilities are dependent on the fluid sealed, temperature, speed, and seal face combinations. For operation outside the limits and additional materials consult Chesterton Mechanical Seal Engineering.

- High-reliability sealing
- Maximum solids handling capability
- Superior performance for demanding applications
- Motion tolerant for mixer applications